

MATERIAL

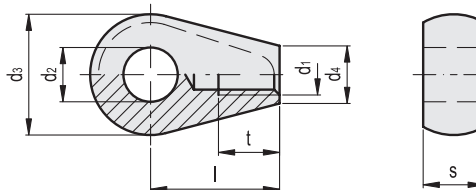
Black-oxide steel, class 5.8 (tensile strength 500 N/mm²).

FEATURES AND APPLICATIONS

GN 444.2 eye nuts can be used together with threaded studs of different lengths. They are used mainly for moulds, connections, equipment, etc.



Conversion Table 1 mm = 0.039 inch	
d2	
mm	inch
8	0.31
10	0.39
12	0.47
16	0.63



METRIC

Code	Description	d1	d2 H7	d3-0.3	d4	l	s-0.15	tmin	⚖️
GN.12704	GN 444.2-M6-8	M6	8	18	8.5	19	9	9	18
GN.12706	GN 444.2-M8-10	M8	10	20	11	24	12	11	30
GN.12708	GN 444.2-M10-12	M10	12	25	13.5	28	14	14	52
GN.12710	GN 444.2-M12-16	M12	16	32	16	34	17	16	110